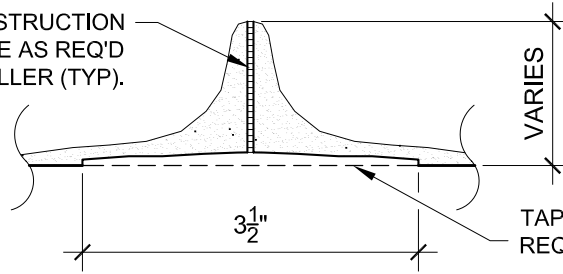


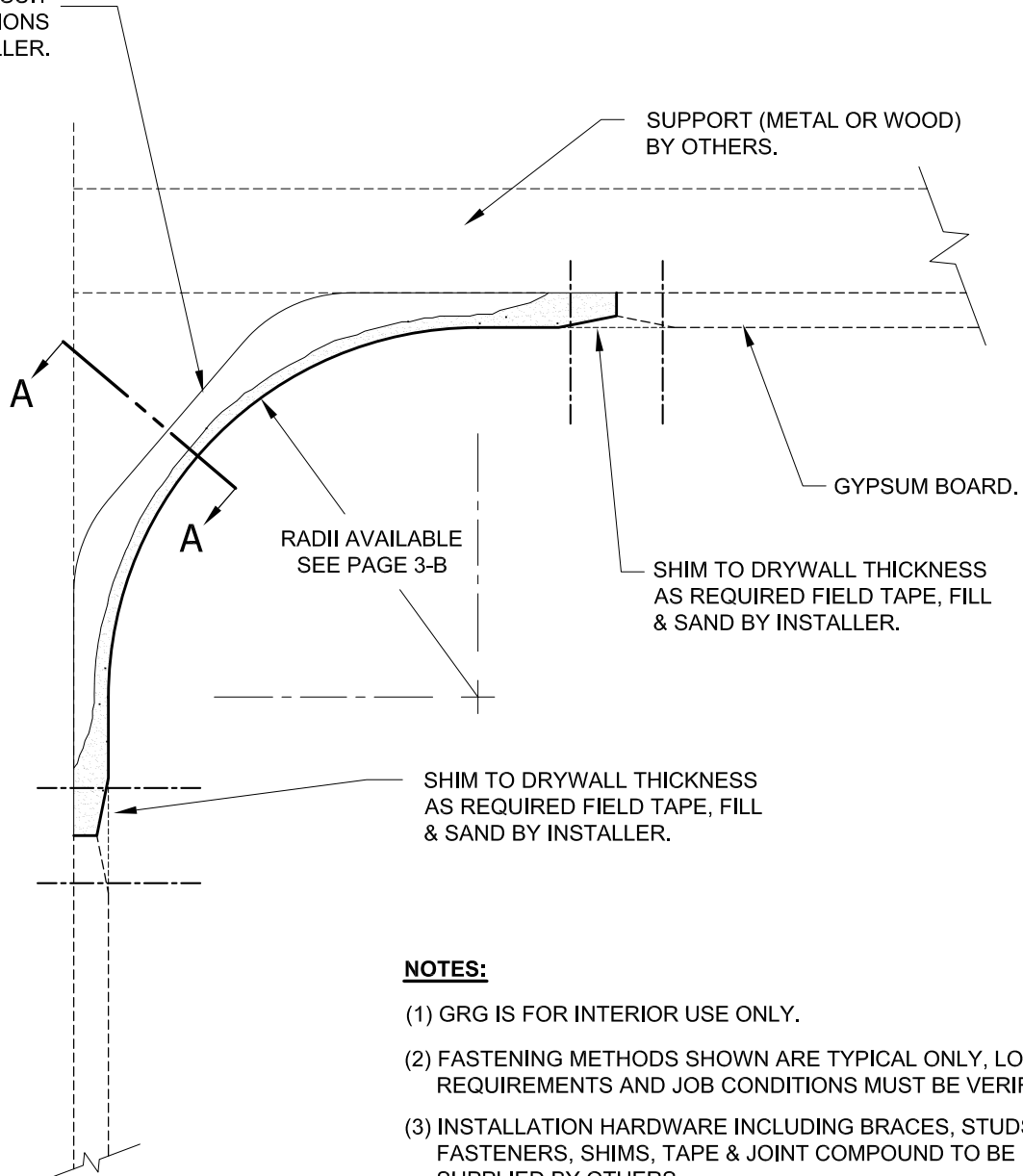
CONSTRUCTION
ADHESIVE AS REQ'D
BY INSTALLER (TYP).



TAPE, FILL AND SAND AS
REQ'D BY INSTALLER (TYP).

SECTION A-A

END FLANGES MAY
BE CUT TO SUIT
SITE CONDITIONS
BY INSTALLER.



NOTES:

- (1) GRG IS FOR INTERIOR USE ONLY.
- (2) FASTENING METHODS SHOWN ARE TYPICAL ONLY, LOCAL CODE REQUIREMENTS AND JOB CONDITIONS MUST BE VERIFIED.
- (3) INSTALLATION HARDWARE INCLUDING BRACES, STUDS, FASTENERS, SHIMS, TAPE & JOINT COMPOUND TO BE SUPPLIED BY OTHERS.
- (4) FULL MATERIAL SPECIFICATION IS AVAILABLE ON REQUEST.
- (5) PREMOLDED CORNERS ARE AVAILABLE.

N.T.S.

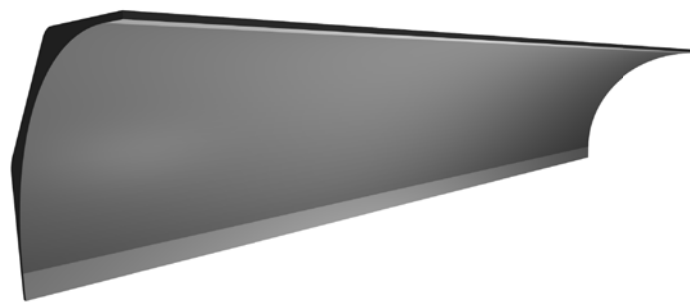
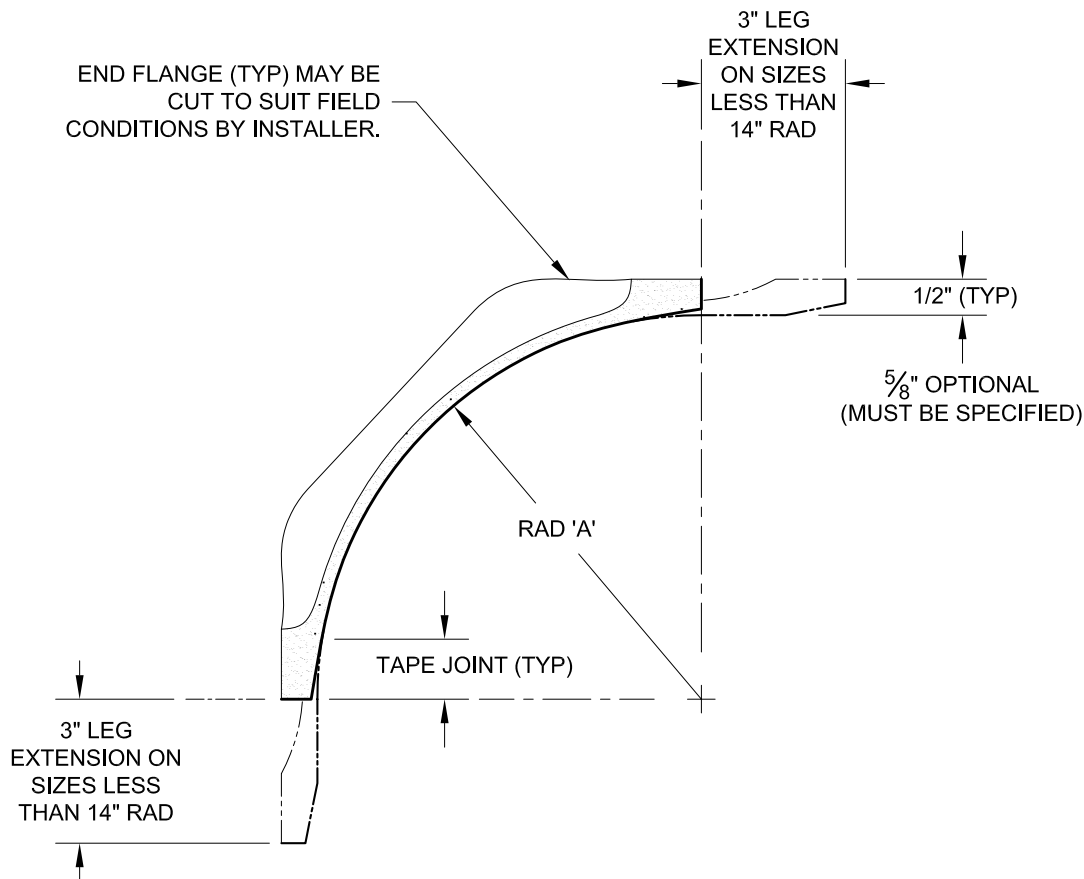
Phone: (416)745-4970
Fax: (416)745-6636

www.decoform.com
1 (877) DECOFORM

Decoform

Typical Installation (GRG) **Coves (Reflectors)**

RAD A	PART No
4"	CR004
6"	CR006
7"	CR007
8"	CR008
9"	CR009
10"	CR010
12"	CR012
14"	CR014
15"	CR015
16"	CR016
18"	CR018
20"	CR020
22"	CR022
24"	CR024
30"	CR030
48"	CR048



REFLECTOR SHADED PERSPECTIVE VIEW

(1) SHIPPED IN STRAIGHT LENGTHS OF 8'-0" MAXIMUM WITH TAPE JOINTS BOTH ENDS.

(3) PREMOLDED CORNERS ARE AVAILABLE.

(2) SEE PAGE 3-A FOR TYPICAL INSTALLATIONS AND ATTACHMENTS.

(4) SEE GENERAL INFORMATION PAGE i.

N.T.S.

Phone: (416)745-4970
 Fax: (416)745-6636
 www.decoform.com
 1 (877) DECOFORM

Decoform

GRG Coves (Reflectors)